


# How-To: Forget a network on your device

This article will be useful if you are having issues with wireless on your phone or laptop and need to forget the wireless network.

 This article will cover Android mobile devices, Apple mobile devices, Apple computers, and Windows computers

## Table Of Contents

- [Here's how it's done](#)
  - [Apple computers](#)
    - [Navigate to network settings](#)
    - [Remove known network](#)
  - [Windows computers](#)
    - [Open Windows 10 Settings app](#)
    - [Manage known networks](#)
  - [Apple iOS Mobile Devices](#)
    - [Navigate to wireless settings](#)
    - [Forget the network](#)
    - [Verify your choice](#)
    - [Check that the process completed](#)
  - [Android mobile devices](#)
    - [Navigate to wireless network settings](#)
    - [Forget the network](#)
- [Wrapping up](#)
- [Related articles](#)

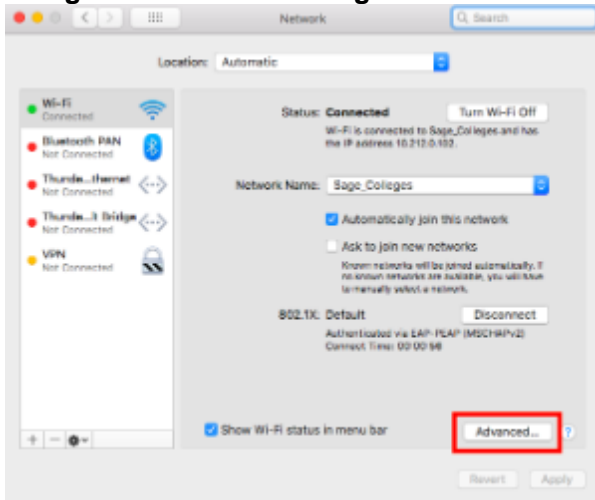
## Here's how it's done

Find the section below dedicated to your device type, or use the table of contents above.

### Apple computers

This section will show you how to remove or forget the "Sage\_Colleges" network from your Apple computer.

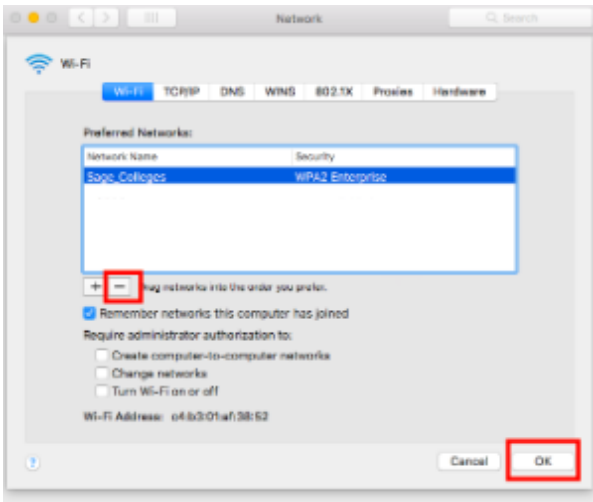
#### Navigate to network settings



click photo to enlarge

Select the "Advanced..." button in the bottom right hand corner, in the screenshot the button has been outlined in red.

### Remove known network



click photo to enlarge

In this screenshot you will need to click on "Sage\_Colleges" and then click the - button highlighted in red.

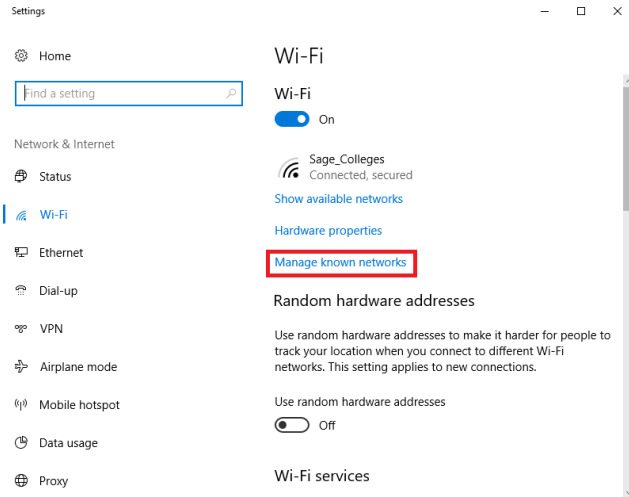
The - button is located in the middle of the window on the left hand side. Once you've clicked the - button the "Sage\_Colleges" network will be forgotten.

Click the Ok button to apply your changes.

## Windows computers

This section will show you how to remove or forget the "Sage\_Colleges" network from your Windows computer.

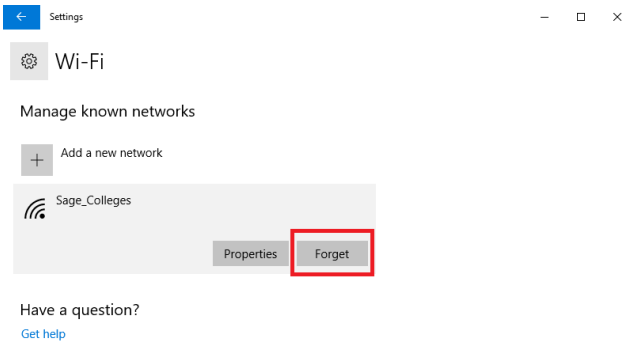
### Open Windows 10 Settings app



click photo to enlarge

Click Wifi on the left sidebar, then click the **Manage known networks** button highlighted in red.

### Manage known networks



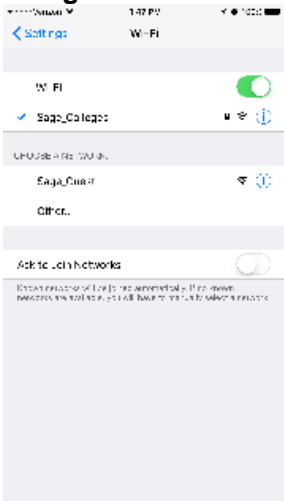
click photo to enlarge

Click the "Sage\_Colleges" network, and select the **Forget** button.

## Apple iOS Mobile Devices

This section will cover how to forget a network on your Apple mobile device.

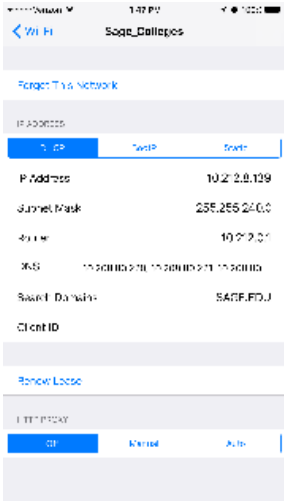
### Navigate to wireless settings



click photo to enlarge

In your wifi settings click the blue "i" located next to the *Sage\_Colleges* wifi network.

### Forget the network



click photo to enlarge

Click **Forget This Network** located at the top of the window.

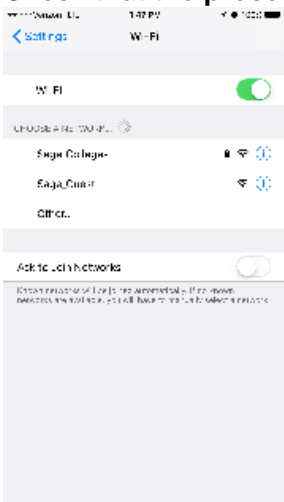
### Verify your choice



click photo to enlarge

You will be asked again if you want to forget the network. This is just a verification step. Click the **Forget** button to proceed.

### Check that the process completed



click photo to enlarge

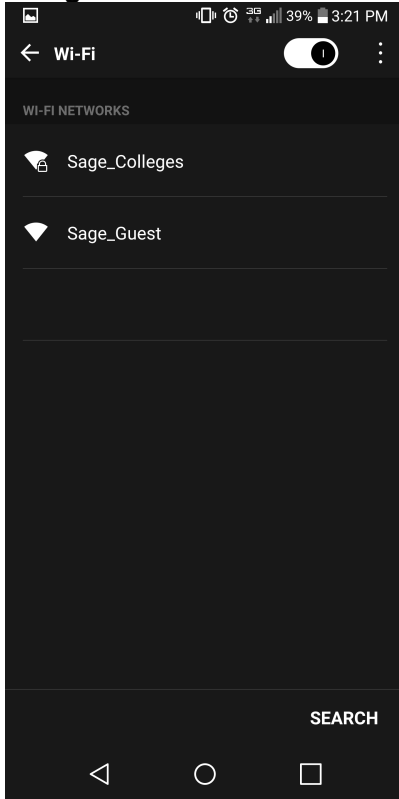
The *Sage\_Colleges* network should now be forgotten. You can verify this by looking for a check-mark in front of the *Sage\_Colleges* network name.

If this check-mark is not present then the network has been forgotten.

## Android mobile devices

This section will cover how to forget a network from an android mobile device.

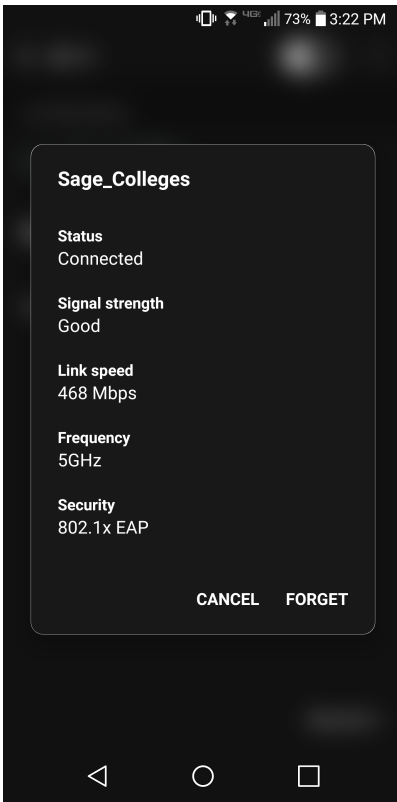
### Navigate to wireless network settings



[click photo to enlarge](#)

Open up your **Settings** application and select **Wifi**. Tap on the **Sage\_Colleges** network.

### Forget the network



click photo to enlarge

Click the **Forget** button to forget the network.

---

## Wrapping up

This article has shown you how to forget the *Sage\_Colleges* network on your computer or mobile device. If you run into any problems please feel free to reach out to the Service Center!

If you need assistance re-connecting to the *Sage\_Colleges* wireless network please follow the guide below:

[How-To: Connect to the Sage wireless network](#)

## Related articles

- [How-To: Disable Private MAC Address in iOS](#)
- [How-To: Connect to the Sage Guest Wifi Network](#)
- [How-To: Connect your streaming media device to Sage's wifi](#)
- [How-To: Connect to the Sage wireless network](#)
- [How-To: Forget a network on your device](#)